

EFFLUENT TANK

LOW PROFILE, UNDER CABIN, EFFLUENT TANK



LOW PROFILE TANK

USES:

- › Low profile, under cabin, effluent tank

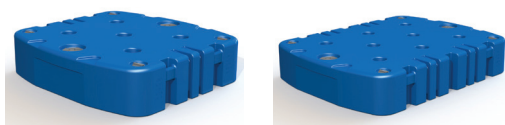
FEATURES:

- › Does not rust or corrode
- › Integrated handles/lifting points
- › Flats for connection of liquid level monitoring device
- › Flats for connection of extended vent pipe
- › Two capacities - 500 and 700 gallon
- › Lighter than steel tanks
- › Strengthened by moulded through columns
- › 8" emptying hatch at both ends
- › 4" access point in each corner
- › Permanent, moulded in, safe handling advice
- › Colour options available, please contact Kingspan Environmental for further information
- › Warranty period: 1 Year

INSTALLATION INSTRUCTIONS

- › Tank should be located on a Flat Level Surface
- › Tank must only be handled / moved when empty

TECHNICAL INFORMATION:



DIMENSION	500 Gallon Tank	700 Gallon Tank
LENGTH (mm)	2235	3100
WIDTH (mm)	2400	2400
HEIGHT (mm)	550	550
MASS (kg)	110	170



8" Lid



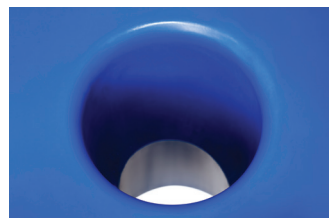
4" Lid



Lifting handle



Moulded in Safe Handling Instructions



Moulded through Column



Flats for Connections