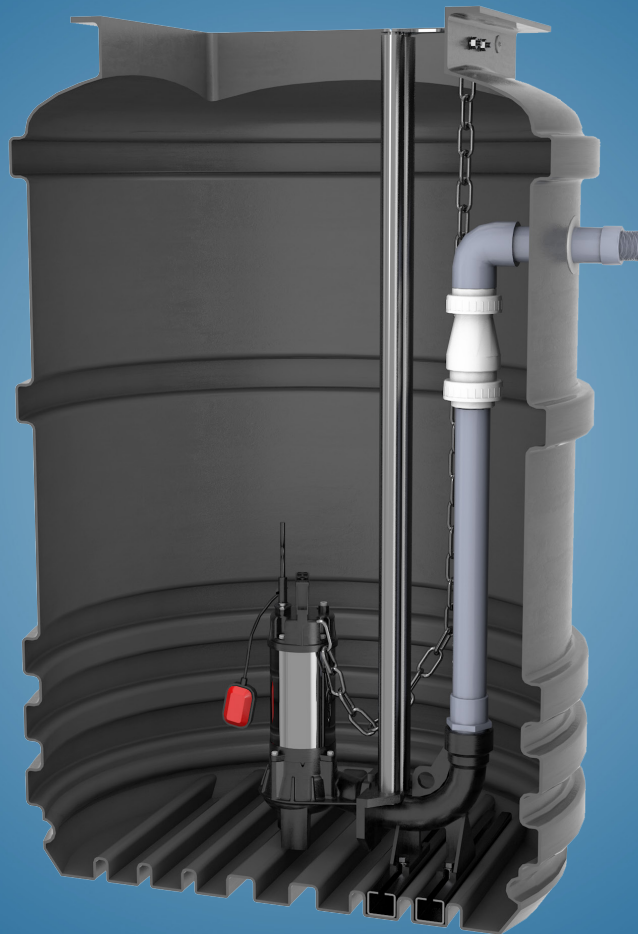




# MINI SINGLE PUMP STATION





# MINI PUMP STATION APPLICATIONS

Suitable for sewage and surface water installations, the Mini is ideally suited to small domestic or light commercial applications.

- Residential extensions
- Basement conversions
- Workshops
- Outbuildings
- Annexes



WATCH VIDEO

## MINI SINGLE PUMP STATION

### PRODUCT OVERVIEW

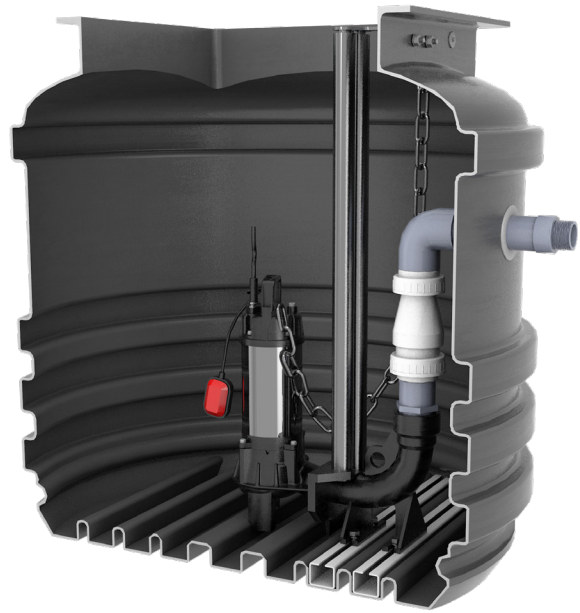
The Mini pump station is a powerful, single pump system that is designed to collect foul water from properties where waste facilities in the property discharge via gravity.

A common application would be for the collection of foul sewage water originating from a domestic or commercial property.

The Mini Single pump station has been designed to ensure a quick and easy installation.

The station allows for one or two 110mm inlets, which are to be drilled on site. The inlet seals come with the chamber and are supplied loose.

The system comes complete with your chosen pump, all internal pipework and valves, pedestrian rated cover and frame, and cable duct. High-level alarms can be added as an optional extra.



### APPLICATION AREAS

The Mini Single pump station is suited to a range of pump applications, these are:-

- Residential properties
- Commercial properties
- Outbuildings
- Annexes
- Camp-sites and holiday homes

### ADDITIONAL COMPONENTS

The Mini Single pump station can be paired with a range of optional components, these are:-

- Additional pipework and connectors
- High-level alarm
- Battery backup systems
- Telemetry solutions
- Heavy duty access covers

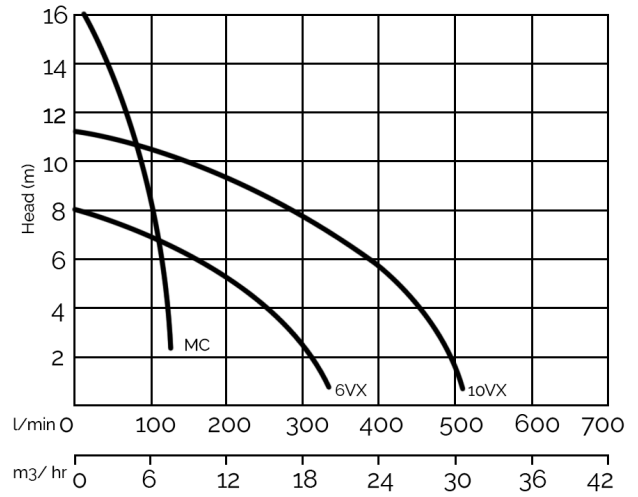
### CHAMBER SPECIFICATIONS

Chamber Dimensions & Capacity			Access Cover Details		Construction	
Diameter	Height	Capacity	Diameter	Rating	Material	Base
1000mm	1000mm	800 Litres	600 x 600 mm	Pedestrian	Galvanised Steel	Steel Reinforced
1000mm	1500mm	1200 Litres	600 x 600 mm	Pedestrian	Galvanised Steel	Steel Reinforced
1000mm	2000mm	1700 Litres	600 x 600 mm	Pedestrian	Galvanised Steel	Steel Reinforced
1000mm	2500mm	1900 Litres	600 x 600 mm	Pedestrian	Galvanised Steel	Steel Reinforced

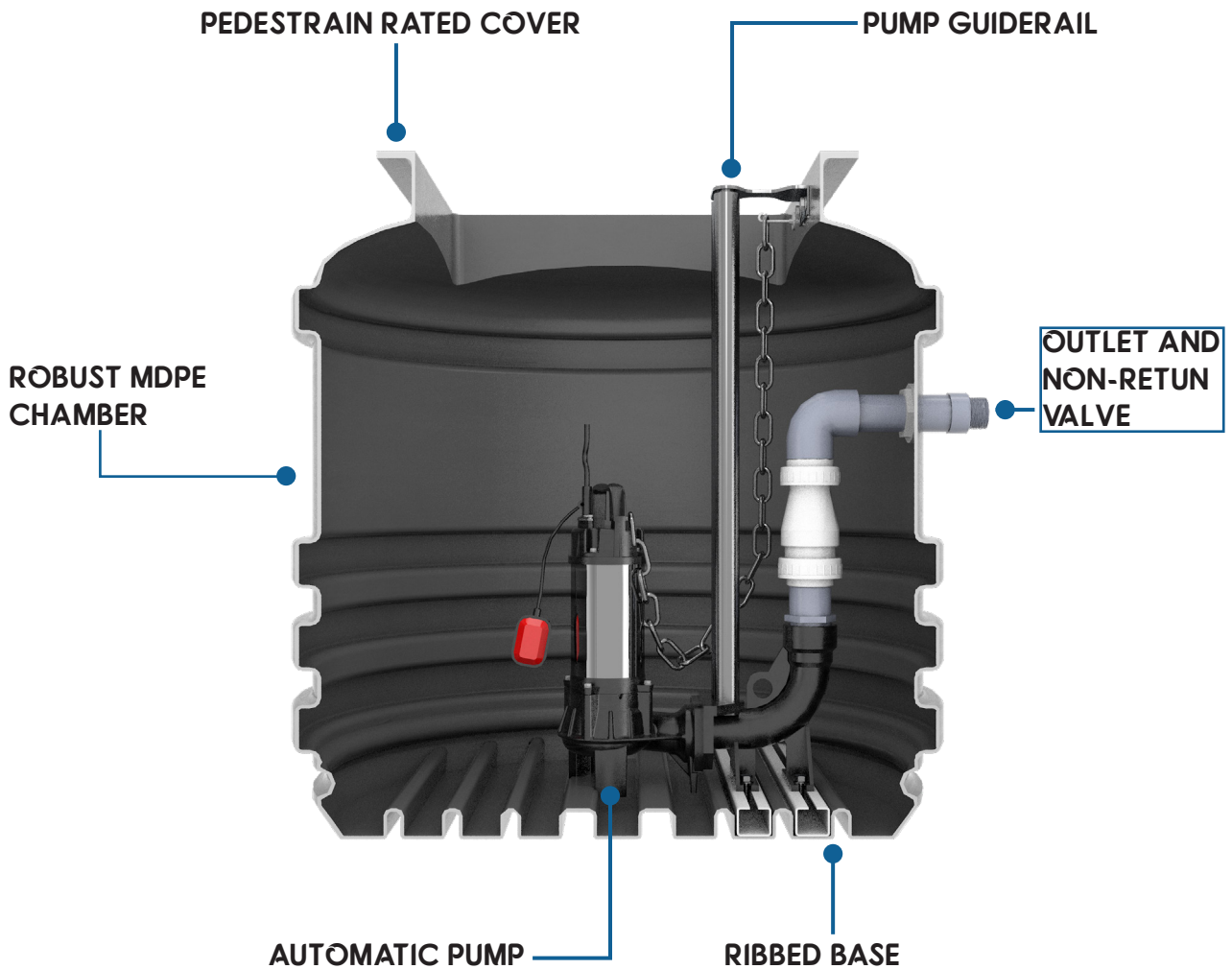
PUMP CURVES

Model Ref	6VX	VX	MC
Impeller Type	Vortex	Vortex	Macerator
Power Supply	230 ~ 1ph ~ 50Hz		
Rated Power	0.3kW	0.75kW	1.2kW
Rated Current	1.9A	4.0A	9.3A
Max Head	6 Meters	10 Meters	16 Meters
Max Flow Rate	5.5 l/s	7.9 l/s	1.8 l/s
Cable Length	10 Meters	10 Meters	10 Meters
Free Passage	50mm	50mm	Macerator
Pipework Size	63mm	63mm	63mm

PUMP CURVES

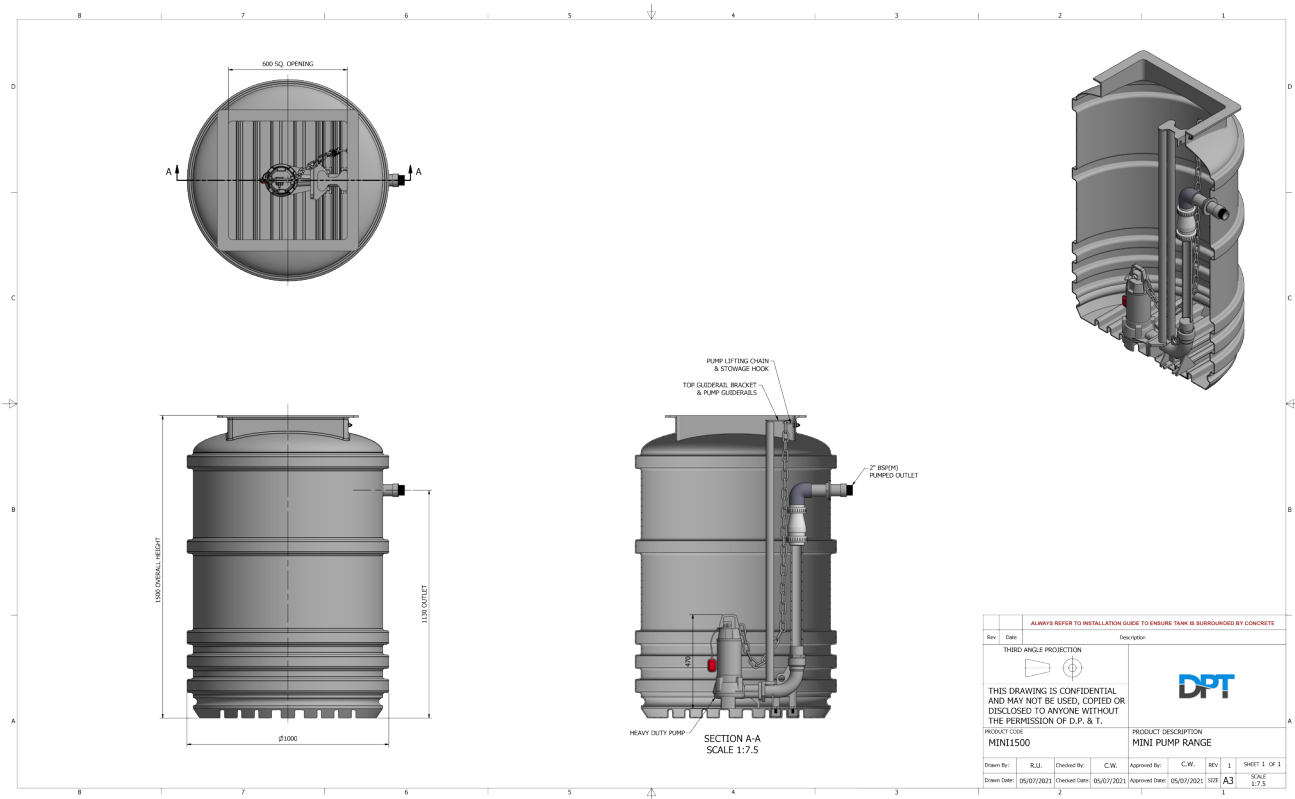
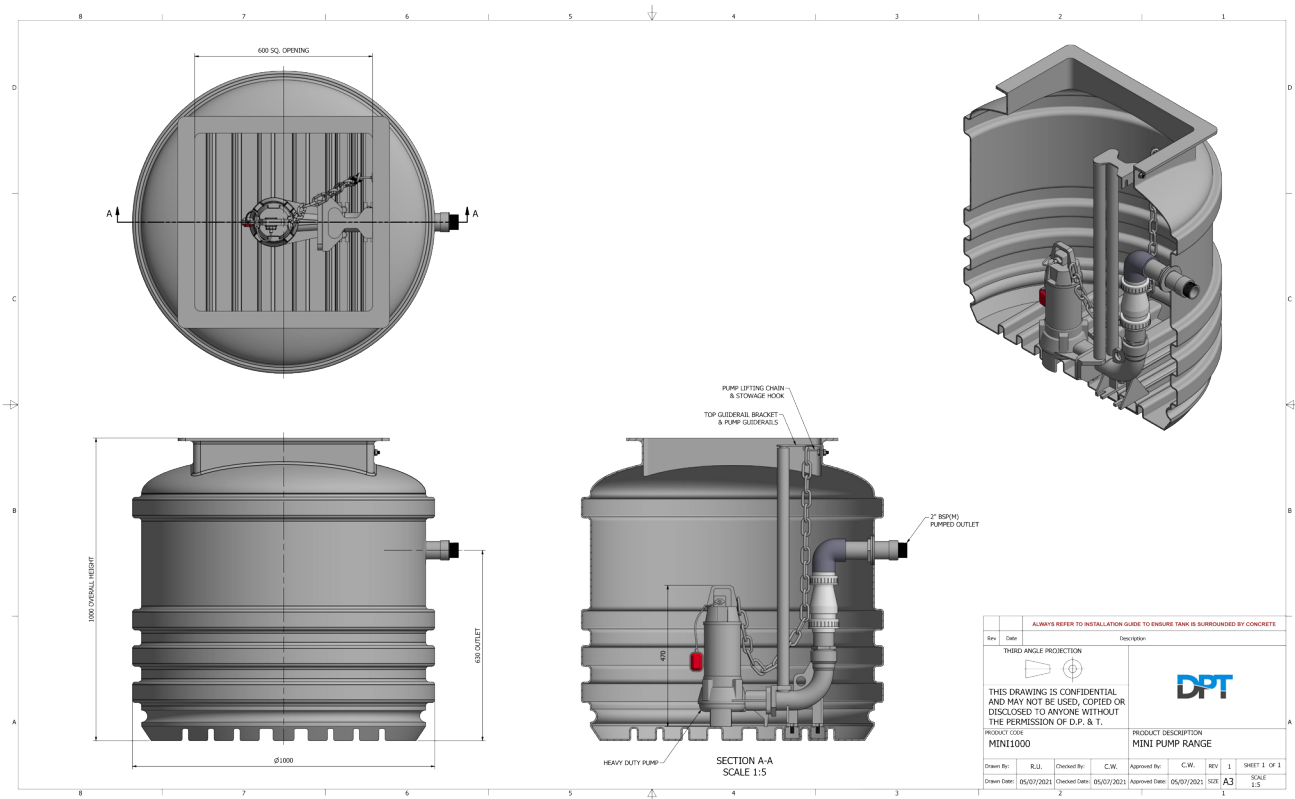


SYSTEM BREAKDOWN

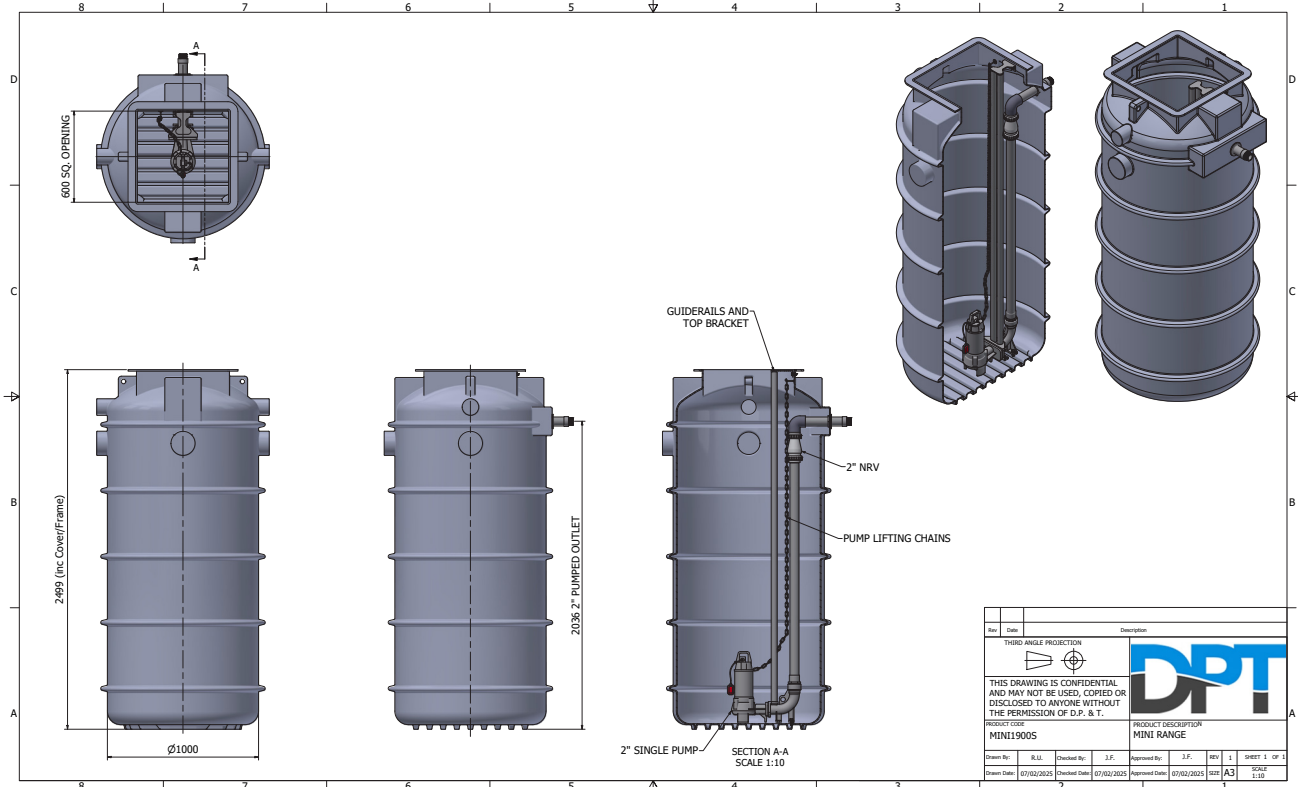
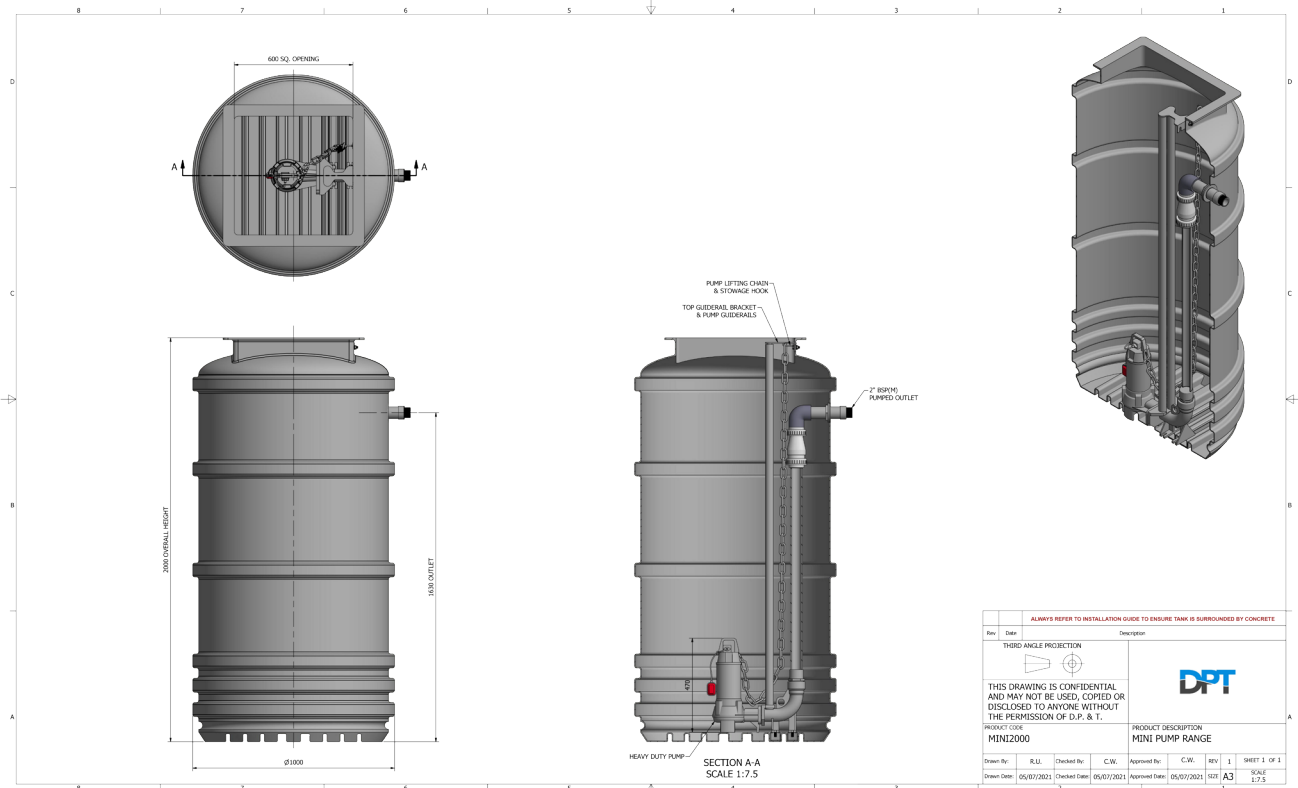


# MINI SINGLE PUMP STATION

## PRODUCT DRAWINGS



PRODUCT DRAWINGS









# COMMISSIONING & SERVICING

Package pump stations require care and maintenance, that's why we offer unmatched support packages and commissioning to compliment your purchase.

- Commissioning
- Call outs
- Scheduled maintenance
- National coverage
- Service packages to suit requirements

### WHY SERVICE YOUR PUMP STATION?

An active service agreement vastly reduces the risk of equipment failing by ensuring that your pump station is kept in working condition 24 hours a day.

Our team of highly experienced engineers can spot potential issues before they turn into a problem which could potentially damage your equipment which would lead to higher costs and disruption to your environment.

We'll always remind you when services are due and we'll make sure appointments are booked in well in advance to ensure our duty of care to the customer.

### NATIONWIDE COVERAGE

We cover the vast majority of British Isles, this means we have engineers in place to get on-site quickly with the skills required to service your equipment.

All of our engineers are expertly trained and have a wide range of industry leading certifications, so you can be sure that any work is undertaken by a registered professional. Each engineer carries a wide range of tools and replacements to get your system up and running as fast as possible, irrespective of your location.



### WHY CHOOSE A SERVICE AGREEMENT?

An active service agreement vastly reduces the risk of equipment failing by ensuring that your pump station is kept in working condition 24 hours a day.

Our team of highly experienced engineers can spot potential issues before they turn into a problem which could potentially damage your equipment which would lead to higher costs and disruption to your environment.

We'll always remind you when services are due and we'll make sure appointments are booked in well in advance to ensure our duty of care to the customer.

### COMMISSIONING

It is highly advised to have your new pump station commissioned by a DPT engineer to guarantee the installation has been done correctly. During the commissioning visit a DPT engineer will carry out the following tasks:-

- Installation of pump
- Installation of High-level alarm if ordered
- Electrical connections of pump
- System cycle and test
- Evaluation of installation
- Commissioning certificate upon completion



## PLANNED MAINTENANCE

Regular maintenance of your pump station is vital to ensure a long life, it is recommended that you have a yearly service of your pump station.

Each service will incorporate the following checks and adjustments:-

- A detailed inspection of mechanical components
- Full control system functionality check
- System adjustments where needed
- Visual inspection for leaks and operational issues
- Small remedial works where needed
- A full service report detailing all work

## PRODUCT WARRANTY

DPT offers a full 1 year warranty on our products for a period of 12 months from the date of invoice.

Upon arrival, your pump station will come with a warranty card outlining all terms and conditions.

Extended warranties are available through the service packages we can provide,

## AVOIDING ISSUES

Sewage pump stations are designed to handle foul water, natural human waste, tissue paper, and other biodegradable items. Other household waste should never be disposed of through the pump station.

Disposal of non-biodegradable items will affect the reliability of all pump stations, causing pumps to block and the storage chamber to become blocked with waste.

Failure to follow these guidelines may result in damaged equipment which would invalidate your warranty.

## ITEMS TO AVOID

- Sanitary products and incontinence materials
- Nappies and baby wipes
- Condoms
- Bandages and plasters
- Cleaning rags, cloths, and clothing
- Ear cleaning buds and facial pads
- Cooking oils



## CONTACT DPT

If you would like to know more about this product, the services we offer, or have any questions, please contact us:-

### SALES TEAM

0115 9444474 (Option 1)  
enquiries@dpandt.co.uk

### SERVICE TEAM

0115 9444474 (Option 3)  
office@dpandtservices.co.uk

[www.directpumpsandtanks.co.uk](http://www.directpumpsandtanks.co.uk)

**DPT**

[DIRECTPUMPSANDTANKS.CO.UK](http://DIRECTPUMPSANDTANKS.CO.UK)