

TITLE
PWHG.5x2.5x2.5-50

DRAWN BY
C.Larkin

DATE
23/05/2024

Foundation Requirements:
The foundation area must be no less in length and width than the external dimensions of the enclosure. The foundation must be constructed so as to be capable of supporting the weight of the enclosure and equipment contained within it. The foundation must be continuous and be no more than ±2mm over any given metre.

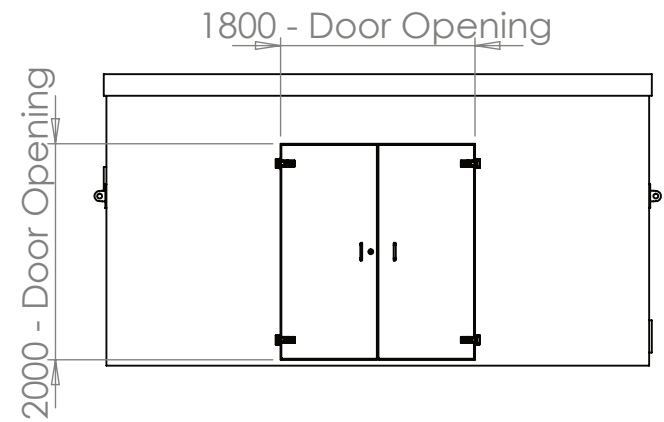
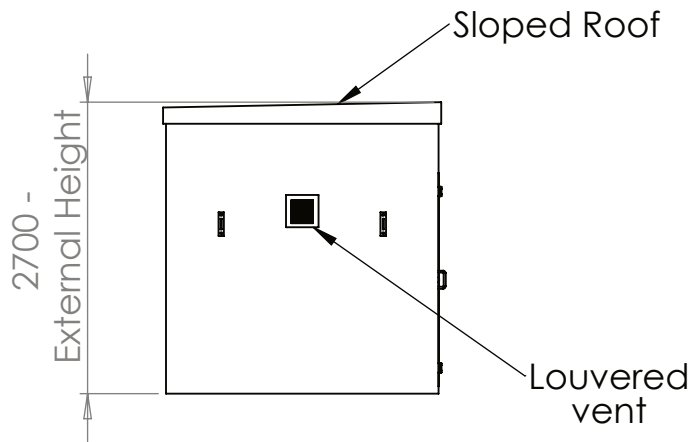
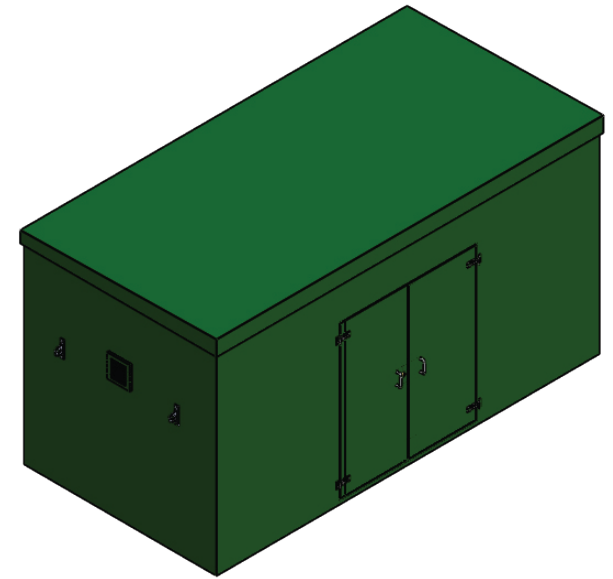
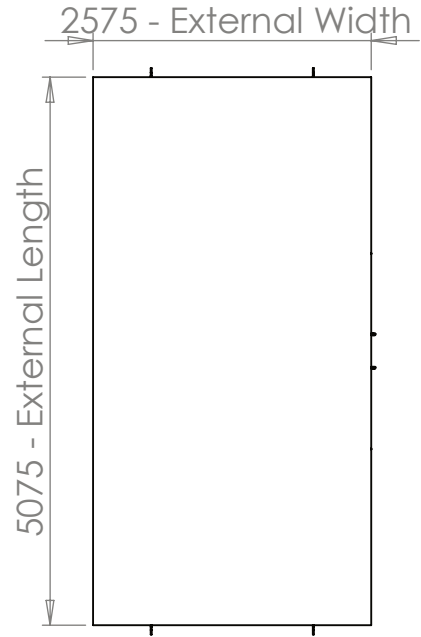
DESCRIPTION:
PWHG.5x2.5x2.5-50
KIOSK

SCALE:1:70 SHEET 1 OF 2

TANK SPECIFICATION :

INTERNAL DIMENSIONS	4700 x 2200 x 2500mm
EXTERNAL DIMENSIONS	5075 x 2575 x 2700mm
INSULATION THICKNESS	50mm
MATERIAL	GRP - GREY





TITLE
PWHG.5x2.5x2.5-50

DRAWN BY: C.Larkin
DATE: 23/05/2024

Foundation Requirements:
The foundation area must be no less in length and width than the external dimensions of the enclosure. The foundation must be constructed so as to be capable of supporting the weight of the enclosure and equipment contained within it. The foundation must be continuous and be no more than ±2mm over any given metre.

DESCRIPTION:
PWHG.5x2.5x2.5-50
KIOSK

SCALE:1:70 SHEET 2 OF 2

TANK SPECIFICATION :

INTERNAL DIMENSIONS	4700 x 2200 x 2500mm
EXTERNAL DIMENSIONS	5075 x 2575 x 2700mm
INSULATION THICKNESS	50mm
MATERIAL	GRP - GREEN

