

TITLE  
**PWHG.3x2x2.5-50**

DRAWN BY  
 C.Larkin

DATE  
 23/05/2024

Foundation Requirements:  
 The foundation area must be no less in length and width than the external dimensions of the enclosure. The foundation must be constructed so as to be capable of supporting the weight of the enclosure and equipment contained within it. The foundation must be continuous and be no more than ±2mm over any given metre.

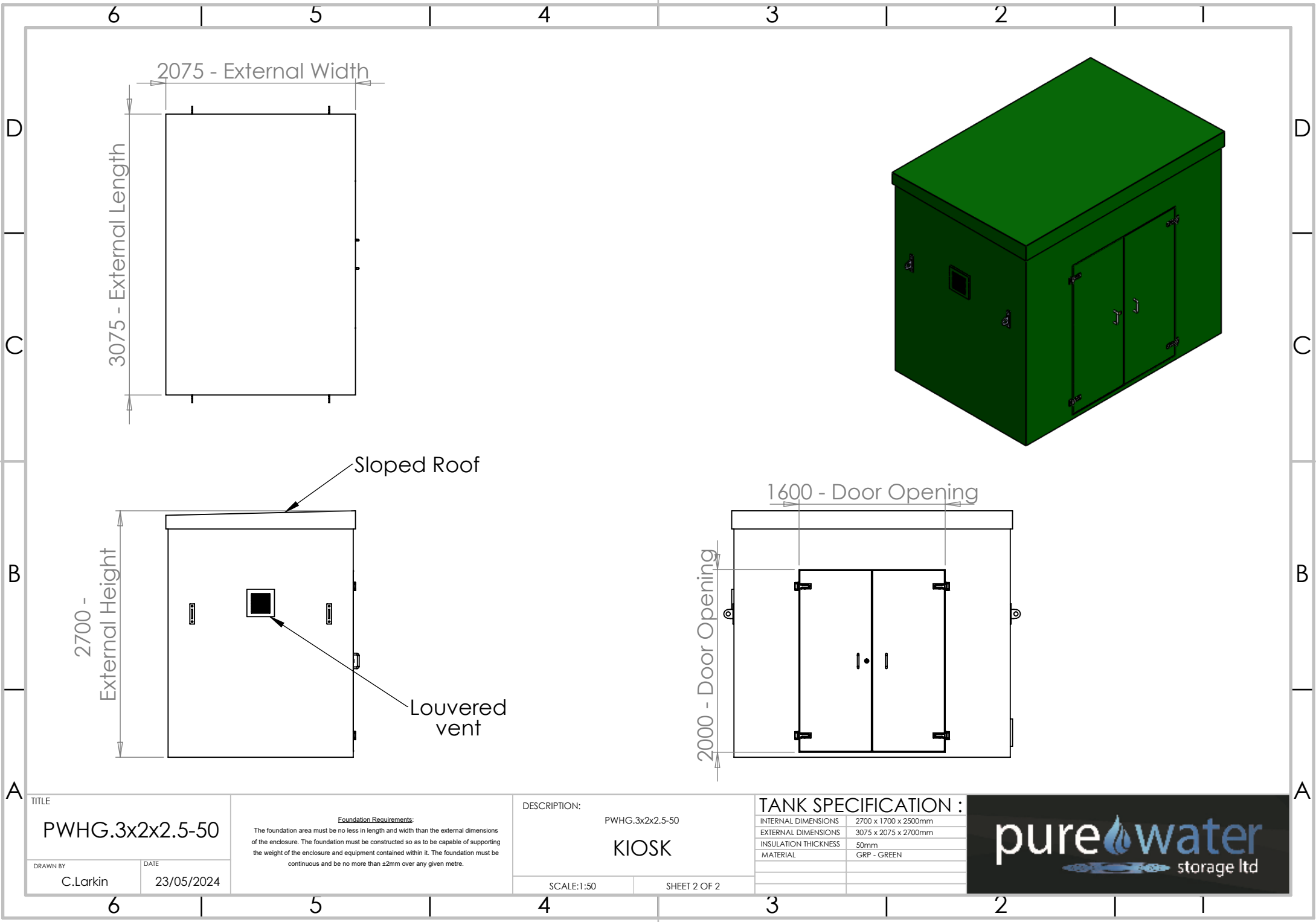
DESCRIPTION:  
 PWHG.3x2x2.5-50  
**KIOSK**

SCALE:1:50      SHEET 1 OF 2

**TANK SPECIFICATION :**

INTERNAL DIMENSIONS	2700 x 1700 x 2500mm
EXTERNAL DIMENSIONS	3075 x 2075 x 2700mm
INSULATION THICKNESS	50mm
MATERIAL	GRP - GREY





TITLE  
**PWHG.3x2x2.5-50**

DRAWN BY  
 C.Larkin

DATE  
 23/05/2024

Foundation Requirements:  
 The foundation area must be no less in length and width than the external dimensions of the enclosure. The foundation must be constructed so as to be capable of supporting the weight of the enclosure and equipment contained within it. The foundation must be continuous and be no more than ±2mm over any given metre.

DESCRIPTION:  
 PWHG.3x2x2.5-50  
**KIOSK**

SCALE:1:50      SHEET 2 OF 2

**TANK SPECIFICATION :**

INTERNAL DIMENSIONS	2700 x 1700 x 2500mm
EXTERNAL DIMENSIONS	3075 x 2075 x 2700mm
INSULATION THICKNESS	50mm
MATERIAL	GRP - GREEN

