

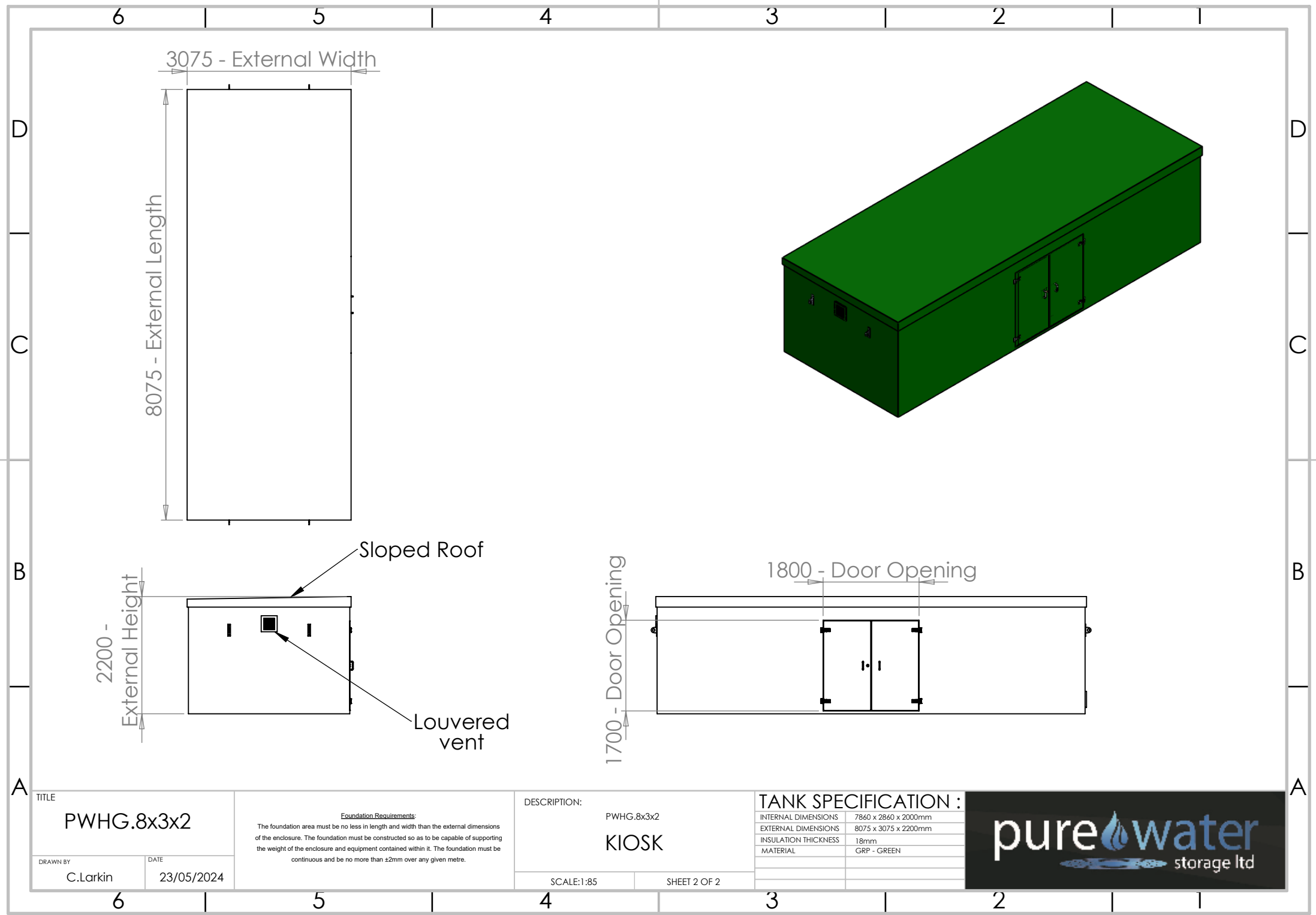
TITLE	
PWHG.8x3x2	
DRAWN BY	DATE
C.Larkin	23/05/2024

Foundation Requirements:
 The foundation area must be no less in length and width than the external dimensions of the enclosure. The foundation must be constructed so as to be capable of supporting the weight of the enclosure and equipment contained within it. The foundation must be continuous and be no more than ±2mm over any given metre.

DESCRIPTION:	
PWHG.8x3x2	
KIOSK	
SCALE:1:85	SHEET 1 OF 2

TANK SPECIFICATION :	
INTERNAL DIMENSIONS	7860 x 2860 x 2000mm
EXTERNAL DIMENSIONS	8075 x 3075 x 2200mm
INSULATION THICKNESS	18mm
MATERIAL	GRP - GREY





3075 - External Width

8075 - External Length

2200 - External Height

Sloped Roof

Louvered vent

1800 - Door Opening

1700 - Door Opening

TITLE	
PWHG.8x3x2	
DRAWN BY	DATE
C.Larkin	23/05/2024

Foundation Requirements:
 The foundation area must be no less in length and width than the external dimensions of the enclosure. The foundation must be constructed so as to be capable of supporting the weight of the enclosure and equipment contained within it. The foundation must be continuous and be no more than ±2mm over any given metre.

DESCRIPTION:	
PWHG.8x3x2	
KIOSK	
SCALE:1:85	SHEET 2 OF 2

TANK SPECIFICATION :	
INTERNAL DIMENSIONS	7860 x 2860 x 2000mm
EXTERNAL DIMENSIONS	8075 x 3075 x 2200mm
INSULATION THICKNESS	18mm
MATERIAL	GRP - GREEN

