

TITLE  
**PWHG.8x2.5x2-50**

DRAWN BY  
 C.Larkin

DATE  
 23/05/2024

Foundation Requirements:  
 The foundation area must be no less in length and width than the external dimensions of the enclosure. The foundation must be constructed so as to be capable of supporting the weight of the enclosure and equipment contained within it. The foundation must be continuous and be no more than ±2mm over any given metre.

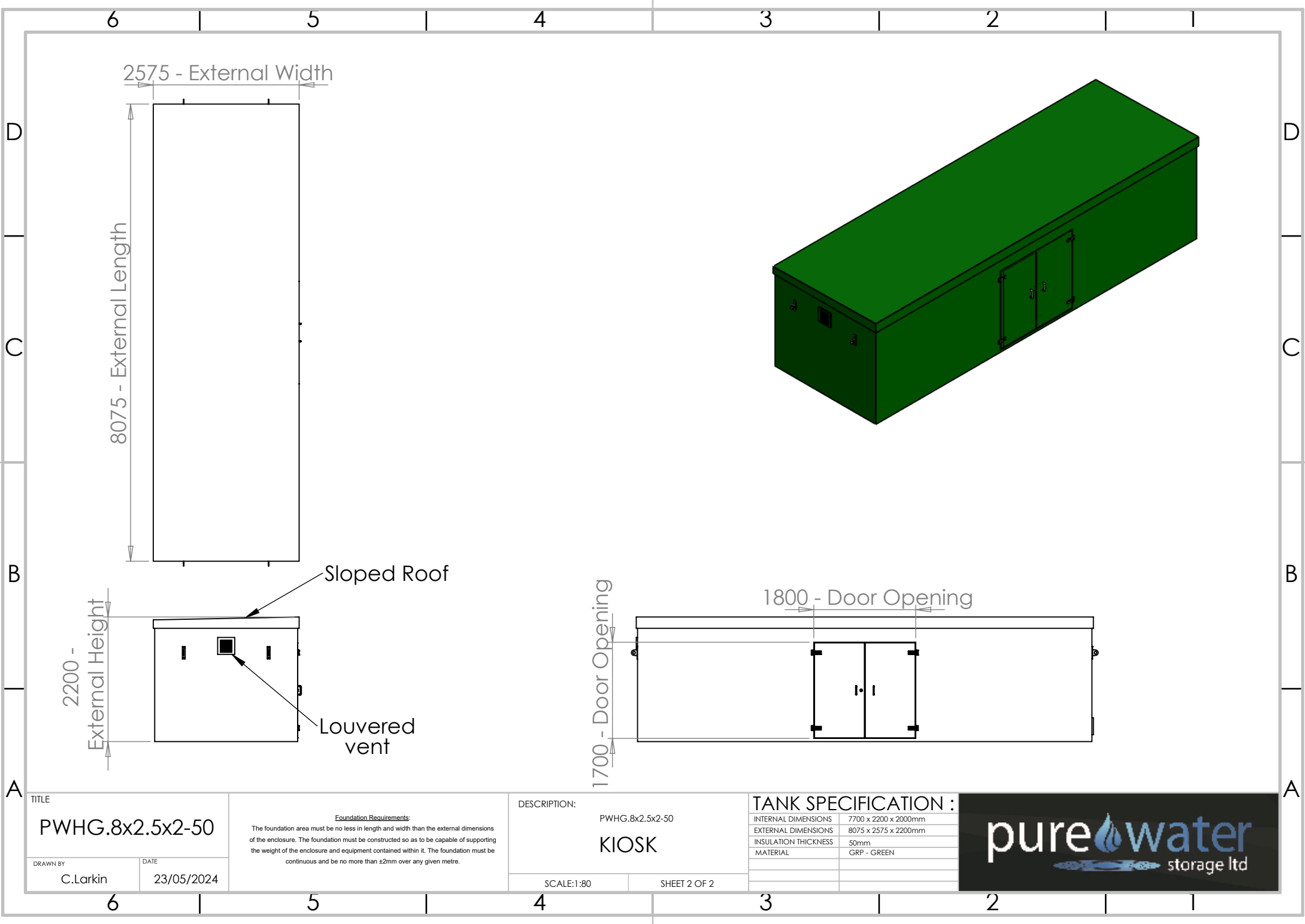
DESCRIPTION:  
 PWHG.8x2.5x2-50  
**KIOSK**

SCALE:1:80      SHEET 1 OF 2

**TANK SPECIFICATION :**

INTERNAL DIMENSIONS	7700 x 2200 x 2000mm
EXTERNAL DIMENSIONS	8075 x 2575 x 2200mm
INSULATION THICKNESS	50mm
MATERIAL	GRP - GREY





2575 - External Width

8075 - External Length

2200 - External Height

Sloped Roof

Louvered vent

1800 - Door Opening

1700 - Door Opening

TITLE  
**PWHG.8x2.5x2-50**  
 DRAWN BY: C.Larkin  
 DATE: 23/05/2024

Foundation Requirements:  
 The foundation area must be no less in length and width than the external dimensions of the enclosure. The foundation must be constructed so as to be capable of supporting the weight of the enclosure and equipment contained within it. The foundation must be continuous and be no more than ±2mm over any given metre.

DESCRIPTION:  
 PWHG.8x2.5x2-50  
**KIOSK**  
 SCALE:1:80  
 SHEET 2 OF 2

TANK SPECIFICATION :	
INTERNAL DIMENSIONS	7700 x 2200 x 2000mm
EXTERNAL DIMENSIONS	8075 x 2575 x 2200mm
INSULATION THICKNESS	50mm
MATERIAL	GRP - GREEN

