

TITLE
PWHG.3x2.5x2

DRAWN BY
 C.Larkin

DATE
 23/05/2024

Foundation Requirements:
 The foundation area must be no less in length and width than the external dimensions of the enclosure. The foundation must be constructed so as to be capable of supporting the weight of the enclosure and equipment contained within it. The foundation must be continuous and be no more than ±2mm over any given metre.

DESCRIPTION:
 PWHG.3x2.5x2
KIOSK

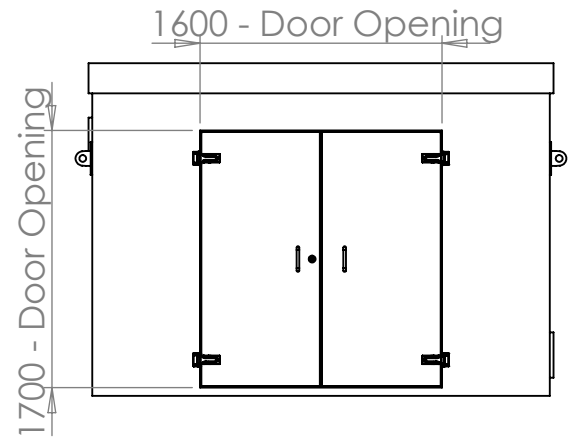
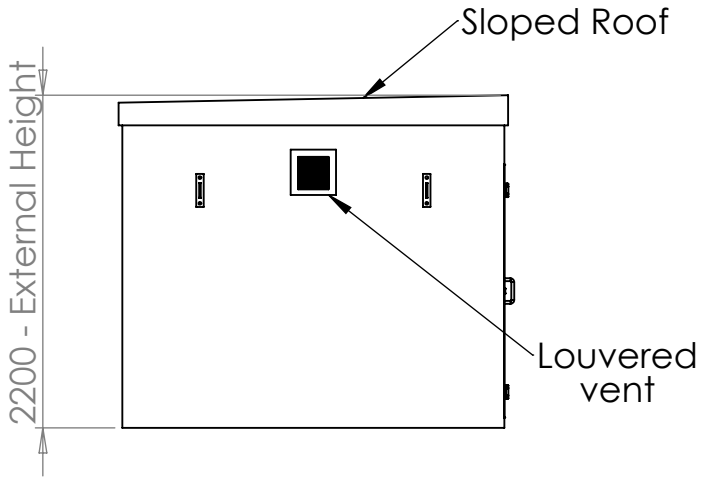
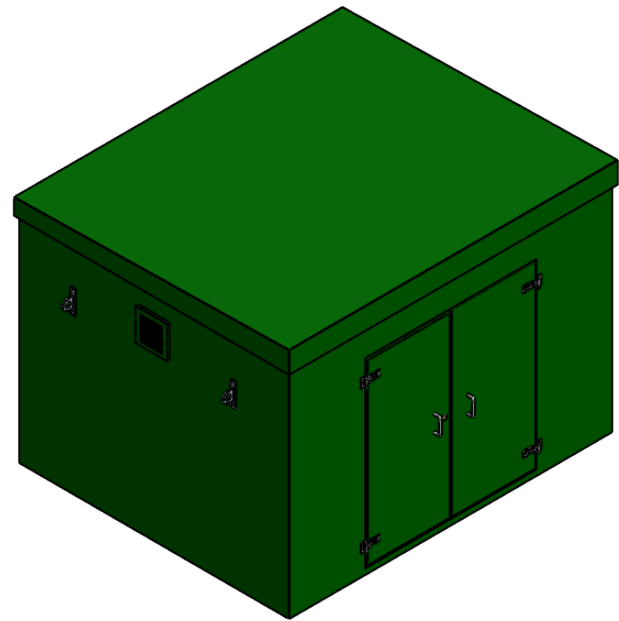
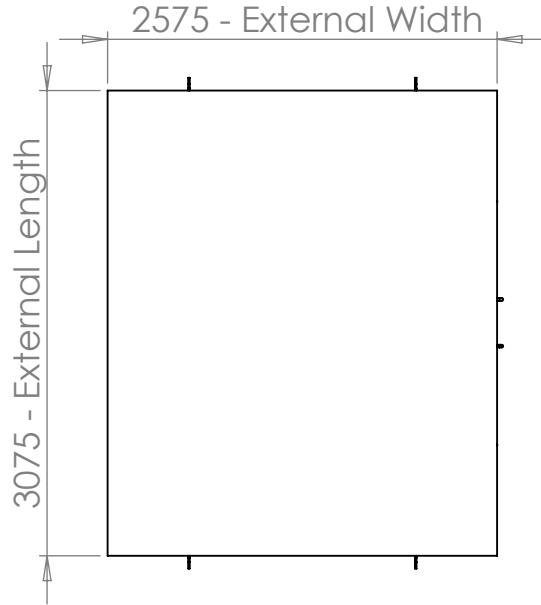
SCALE:1:50

SHEET 1 OF 2

TANK SPECIFICATION :

INTERNAL DIMENSIONS	2860 x 2360 x 2000mm
EXTERNAL DIMENSIONS	3075 x 2575 x 2200mm
INSULATION THICKNESS	18mm
MATERIAL	GRP - GREY





TITLE
PWHG.3x2.5x2

DRAWN BY
 C.Larkin

DATE
 23/05/2024

Foundation Requirements:
 The foundation area must be no less in length and width than the external dimensions of the enclosure. The foundation must be constructed so as to be capable of supporting the weight of the enclosure and equipment contained within it. The foundation must be continuous and be no more than ±2mm over any given metre.

DESCRIPTION:
 PWHG.3x2.5x2
KIOSK

SCALE:1:50 SHEET 2 OF 2

TANK SPECIFICATION :

INTERNAL DIMENSIONS	2860 x 2360 x 2000mm
EXTERNAL DIMENSIONS	3075 x 2575 x 2200mm
INSULATION THICKNESS	18mm
MATERIAL	GRP - GREEN

