

TITLE
PWHG.4x2x2

DRAWN BY
 C.Larkin

DATE
 22/05/2024

Foundation Requirements:
 The foundation area must be no less in length and width than the external dimensions of the enclosure. The foundation must be constructed so as to be capable of supporting the weight of the enclosure and equipment contained within it. The foundation must be continuous and be no more than ±2mm over any given metre.

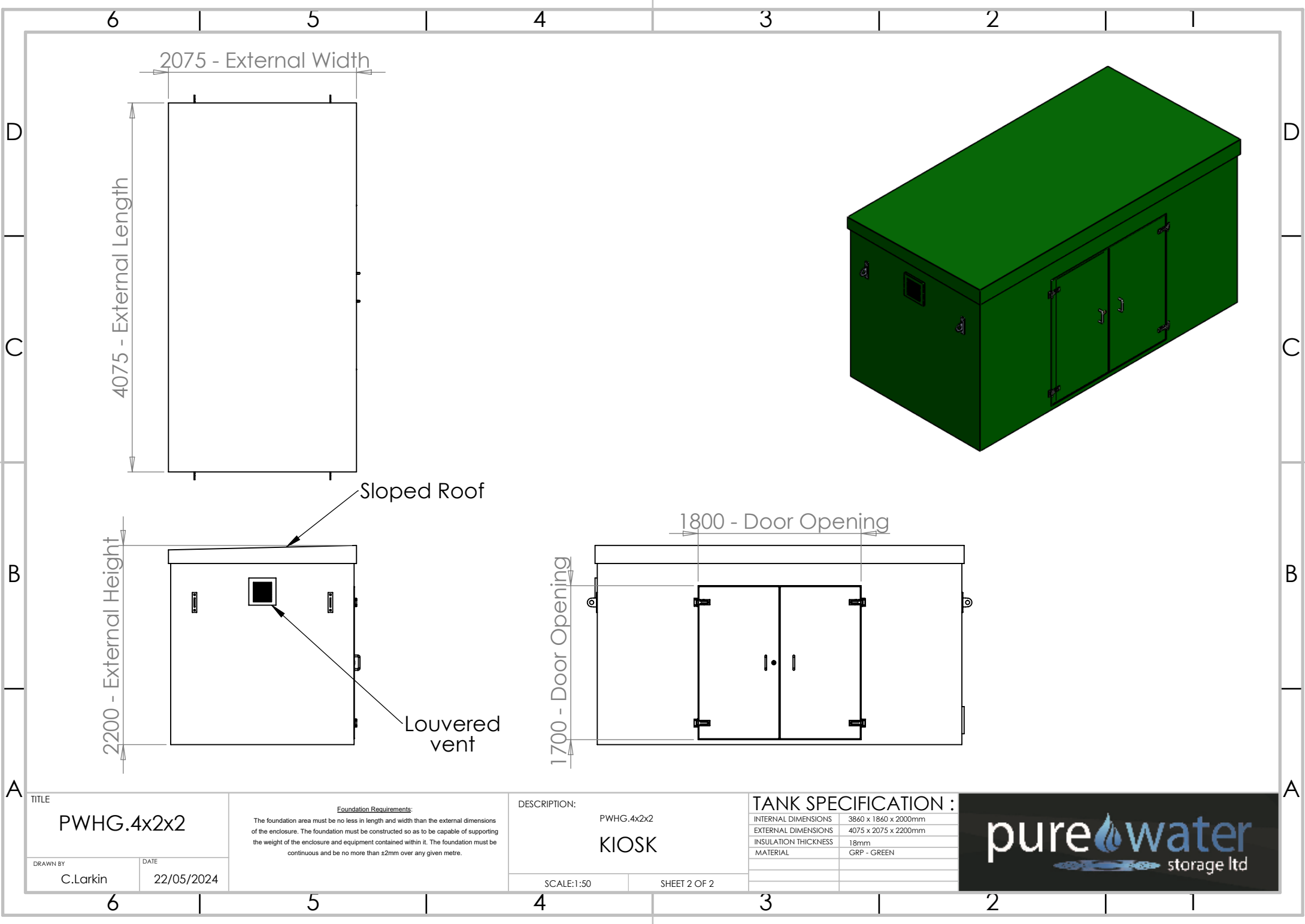
DESCRIPTION:
 PWHG.4x2x2
KIOSK

SCALE:1:50 SHEET 1 OF 2

TANK SPECIFICATION :

INTERNAL DIMENSIONS	3860 x 1860 x 2000mm
EXTERNAL DIMENSIONS	4075 x 2075 x 2200mm
INSULATION THICKNESS	18mm
MATERIAL	GRP - GREY





TITLE
PWHG.4x2x2

DRAWN BY
 C.Larkin

DATE
 22/05/2024

Foundation Requirements:
 The foundation area must be no less in length and width than the external dimensions of the enclosure. The foundation must be constructed so as to be capable of supporting the weight of the enclosure and equipment contained within it. The foundation must be continuous and be no more than ±2mm over any given metre.

DESCRIPTION:
 PWHG.4x2x2
KIOSK

SCALE:1:50

SHEET 2 OF 2

TANK SPECIFICATION :

INTERNAL DIMENSIONS	3860 x 1860 x 2000mm
EXTERNAL DIMENSIONS	4075 x 2075 x 2200mm
INSULATION THICKNESS	18mm
MATERIAL	GRP - GREEN

